



Platinum **CURVE** Stairlift

Installation Manual



- THIS GUIDE IS COMPANY CONFIDENTIAL
- PLEASE RETAIN THIS GUIDE
- THIS GUIDE IS NOT TO BE LEFT WITH THE CUSTOMER

Contents

About the Stairlift _____	4
Controls _____	5
Swivel Seat _____	6
Charging Points _____	7
Remote Controls _____	7
Kitting List _____	8
Required Installation Equipment _____	9
Installing the Stairlift _____	11
Installation Drawing _____	11
Assembling the Rail _____	12
Fixing the Rail Assembly in Place _____	14
Fitting the Carriage to the Rail _____	15
Fitting the Batteries _____	16
Fitting the Combined End Stops/Charging Ramps _____	17
Charge Circuit _____	18
Intermediate Charge Point _____	19
Fitting the Chair to the Carriage _____	20
Chair and Carriage Electrical Connections _____	21
Chair Ergonomic Alteration _____	22
Test Running Stairlift Unladen and Unprogrammed _____	24
Programming the Carriage _____	25
Installing Remote Controls _____	27
Test Running Stairlift Fully Laden and Programmed _____	29
Final Checks _____	30
Contract/Installation Drawing _____	30
Electrical, Battery and Operational Tests _____	30
Certificate for Test and Examination After Installation _____	31
Instructing the User _____	32
Paperwork _____	33
User Guide _____	33
Offset Footrest Option _____	34
Connection Diagram _____	35
Technical Information _____	36
Weight Limits _____	36
Operating Periods _____	36
Diagnostic Codes _____	37
Handwinding the Stairlift _____	38
Servicing _____	40

About this Manual

Description of this manual

This manual is intended to show you how to install a Platinum Curve stairlift. This manual contains detailed instructions about:

- Intended Audience and their Required Knowledge
- Typical Kitting List of Parts in a Platinum Curve stairlift
- Required Installation Equipment you will need to install a stairlift
- Health and Safety Guidance
- Installing the stairlift
- Testing the stairlift
- Troubleshooting
- Technical Information and System Status Codes
- Instructing the User how to Use the Product
- Paperwork
- Quick Reference Guide

You should also have a User Guide to refer to – you must give this to the resident when the installation is completed.

Intended Audience

This manual has been written to be used by specialist trained stairlift installers.

The information in this guide assumes that you have already completed specialist training on how to install a Platinum Curve stairlift and you have performed an installation before, either at a customers dwelling or as part of a training course.

- This manual is not intended as a training guide
- This manual is not intended to show an unskilled person how to install a stairlift

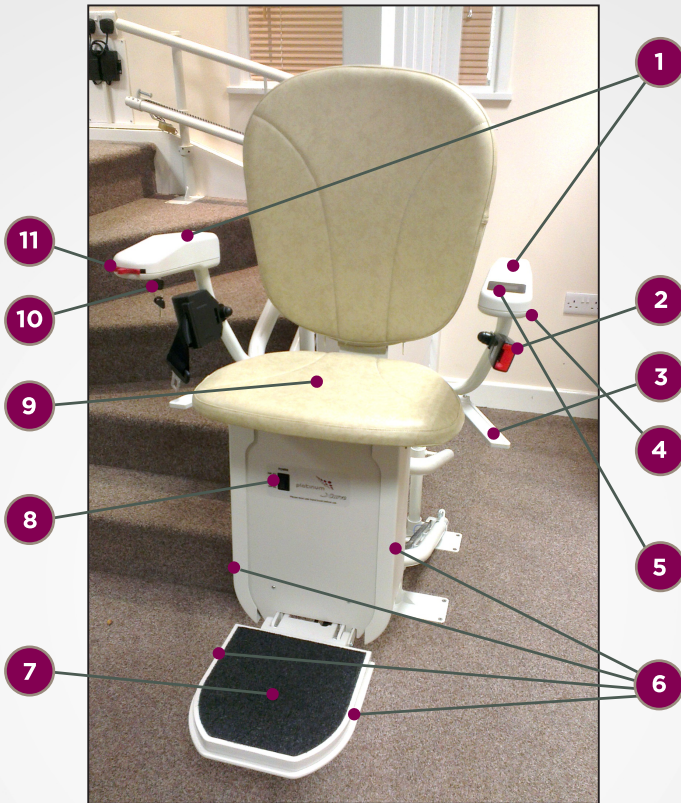
Required Knowledge

This manual assumes that you have the following knowledge:

- Basic Mechanical Skills - so you understand what the components of the stairlift do and how they fit and work together
- Basic Wiring Skills - so you understand how the stairlift is connected to the mains power supply; and what the electrical components of the stairlift do and how they fit and work together
- Health and Safety Awareness - so you are fully aware of and responsible for the health and safety of yourself and the people around you

This Product Should Only Be Installed by Trained/Certified Personnel. If this product is to be installed in premises with public access, symbol number 0100 of ISO 7000 should be used at every boarding point in accordance with guidelines included in this standard.

About the Stairlift



No. Meaning

- 1 Arm Rests (folds up and down)
- 2 Lap Belt
- 3 Seat Swivel Lever
- 4 Powered Footrest Control (if option fitted)
- 5 Status Display
- 6 Safety Limit Covers
- 7 Footrest (folds up and down)

No. Meaning

- 8 Battery Isolator Switch
- 9 Seat (folds up and down)
- 10 Key Switch
- 11 Direction Control
- 12 Mains Power Connection
- 13 Charging Point
- 14 Remote Control

Controls

Mains Power Connection (12)

The stairlift should be plugged in at the nearest mains socket. This could be at the top or bottom of the stairs. The lift needs to be plugged in and switched on at all times. When the power is on, a green indicator light will be shown on the power supply, mounted nearby.



Battery Isolator Switch

The Battery Isolator Switch (8) is used to switch the stairlift on or off. This should be left switched on at all times.



Status Display

The diagnostic display (5) displays the current status. If any faults develop with the operation of the lift they will be displayed here. For a list of codes please see System Status Codes section in this manual.



Key Switch

The Key Switch (10) is used to lock the stairlift. The Key Switch is located on the underside of the armrest which contains the direction control.



Direction Control

The Direction control (11) is red and located on the end of one of the armrests. To move the chair, push and hold the joystick in the direction you want to move. There is a short delay before the stairlift will start or change direction.



Footrest

The footrest (7) folds up and down manually.

Powered footrest option - There is an option of an automatic powered footrest. If this option is fitted the powered footrest can be operated by using the powered footrest control (4). This is located on the underside of the opposite armrest containing the direction control



Swivel Seat

For safety, the seat (9) is locked into one of two positions. In the normal travel position, the seat will be locked into position with your back parallel to the track. This is so you do not catch your feet on the steps during travel. The lift will not travel unless the the seat is locked into this position.



The seat can be swivelled approx. 85 degrees to allow easy access when the lift is at the top of the stairs. To rotate the seat, lift one of the Seat Swivel Levers (3), and swivel towards the landing until the seat comes to a stop then release the lever to lock the seat in place. Make sure the seat is locked before you try to sit down or get up from it.



To return the seat to the normal travel position, lift one of the seat swivel levers (3) and swivel away from the landing until the seat comes to a stop then release the lever to lock the seat in place. The seat only swivels at the top of the stairs. If you try to swivel the seat whilst the lift is moving, the chair will stop.

Powered Swivel Option - There is an option of an automatic powered swivel. If this option is fitted, when reaching the top of the stairs, keep the direction control pressed upwards. After a short pause, the carriage will swivel towards the landing. To return the carriage to the normal travel position, press the direction control downwards and the chair will swivel back into the normal travelling position before moving down the stairs.



Safety Edges

The footrest and the motor unit are fitted with Safety Edges (6). These are pressure pads which will stop the lift if they come into contact with any obstructions.

If the lift stops because it has encountered an obstruction, a fault code will be displayed on the diagnostic display. Wait two or three seconds, then reverse away from the blockage.



Lap Belt

The Lap Belt (2) holds you safely on the seat as you climb or descend the stairs. Like a car seat belt, this extends from the holder to clip into a socket. The lap belt must be used every time the stairlift is used. Do not undo the lap belt until the chair reaches the end of the track.



Charging Points

Charging Points

The Charging Points (13) are located at the top and bottom of the track. The lift MUST be parked on a charging point when not in use. The stairlift will sound an audible beep if it is not parked on a charging point.



Remote Controls

The Remote Controls (14) work in the same way as the arm controls. The standard lift is supplied with 2 remote controls. These remote controls have 3 buttons. Up, Down and Park.



Typical Kitting List

A typical installation will use the following supplied parts:

- Leg bases (number specified on the Installation drawing)
- Track sections (number specified on the installation drawing)
- M8 x 10 Grub screws (3 per leg)
- 38mm Spirol pins for track joints (2 per joint)
- 6.3mm by 50mm screws (4 per leg)
- M6 by 40mm rack jointing bolts and M6 nuts (1 set per joint)
- 2 x End Stop/Charging assemblies
- 6 x M5 x 10 buttonhead cap screws
- 2 x Red spade crimp connectors
- 2 x Red ring crimp connectors
- White 2-core 0.5 sq mm cable
- 2 x cable grommets
- 4 x Track end bungs
- Leg top bungs (1 per leg)
- 1 x PSU and plug
- 2 x Remote controls and holsters (unless more requested)
- Red rawplugs (2 per wall control, 4 per charger)
- 8 x 1 Pozidrive wood screws (2 per wall control, 4 per charger)
- 2 x AAA batteries (2 packs of 2)
- 2 x 12v 8.5 aH Chair batteries
- 8 x 100 x 2.5 Natural tie wraps
- 2 x Self-adhesive cable clips
- Installation drawing
- Chair top
- Carriage
- Silicone or synthetic PTFE lubricant for the racking
- 1 x Manual winding handle (to be left with the user)
- 1 x User Guide (to be left with the user)



Required Installation Equipment

To perform a typical installation you will need to use the following types of equipment:

- Safety Goggles and Rigger Gloves
- Spirit level, plus 5 metre tape measure
- Drillbits:
 - 5.9mm, 5mm & 4.2mm HSS Drill Bits. 5mm Tap
 - 8mm masonry drill bits (for drilling into brick, stone, concrete, etc)
 - No 3 Screwdriver bit and extension bar for drill to use on footplate screws
- Combination Spanners / Sockets
 - One set of Combination Spanners, from M6 to M24 in size
 - Socket set, 2.5 mm to 20mm - ideally with ratchet drive
 - 7mm Socket Wrench (with short /stubby arm for use in confined spaces)
 - Torque Wrench, 17mm socket & 4mm allen key bit
- One set of metric Allen Keys
- Screwdrivers:
 - One set of Crosshead screwdrivers
 - Stubby Pozidrive screwdriver
 - One set of flat bladed screwdrivers, in various sizes
 - Terminal screwdriver
- Anti-static wrist strap
- Electric drill (varispeed with hammer/non-hammer action) (either mains-powered or 24V cordless)
- Wire strippers
- Dowel or metal rod to push cable through the track sections
- Electrical or Combination pliers and Electrical side cutters
- Heavy-duty extension lead
- 20oz claw hammer
- 5mm x150mm pin punch with pointed tip
- Long-nose pliers
- Angle-finder
- Digital multi-meter/clamp meter (must be capable of measuring DC currents of up to 30A for at least 5 seconds)
- Section of racking or rack clamp to use for clamping track sections together



Electrical Safety

Installation of the stairlift is mainly a manual process. Although you do need to plug the stairlift into a mains power supply socket, this socket MUST already have been installed by a qualified electrician.

All work on the Mains system must be done by a qualified electrician.

Safe Working Practices

When installing the stairlift, follow safe working practices in these areas:

- Working at heights or on the stairs
- Working with power tools or equipment which generate noise
- All loading, transport, unloading, unpacking, lifting and carrying of the equipment should be done in line with current HSE guidelines

Be aware of the risks of equipment falling from a height. For example, tools falling through open-treaded staircases or through banister rails, or equipment falling or sliding down stairs.

Always use lifting points supplied in equipment packaging.

Please observe warnings and guidelines printed on equipment packaging.

Giving Guidance to the Site Owner

Important – Intruder Alarms

Intruder alarms often have sensor pads at the top or bottom of staircases or on one or more steps. There may also be alarm wires hidden under a carpet or tucked under a skirting board. Check whether any such sensors or cables need to be moved before drilling into a staircase or floor.

Provide guidance to the home owner about what safety risks they and any other people might be exposed to during the installation. For example

- Movement of equipment and tools posing a risk to the buildings or things in it (such as pictures, paintings or ornaments)
- Cables and other equipment posing a trip hazard - especially on or near stairs
- Live electrical equipment (such as electric drills) posing a hazard (for example, if used inappropriately by children)
- Potentially sharp equipment (such as saws, drills bits, knives or chisels)
- Potential noise due to the use of power tools
- Potential creation of airborne dust
- Remember to let the resident know you will take them through how to use the stairlift, so they can let some-one else know what time a demonstration might take place
- Resident must keep boarding/exit areas of the stairlift clear and well lit to a level of 50 lux.

Preparing the Workplace

Before you start the installation, make sure of a Safe Working Environment, with enough space to assemble the stairlift assembly and for you to work around it.

Make sure any loose or fragile property (such as pictures or ornaments) are located in a safe place away from the working area.

Inspect the area for potential obstructions such as central heating pipes, hidden cables, underfloor heating, etc.

The work area should be well lit. If sufficient lighting is not available, temporary lighting should be used.

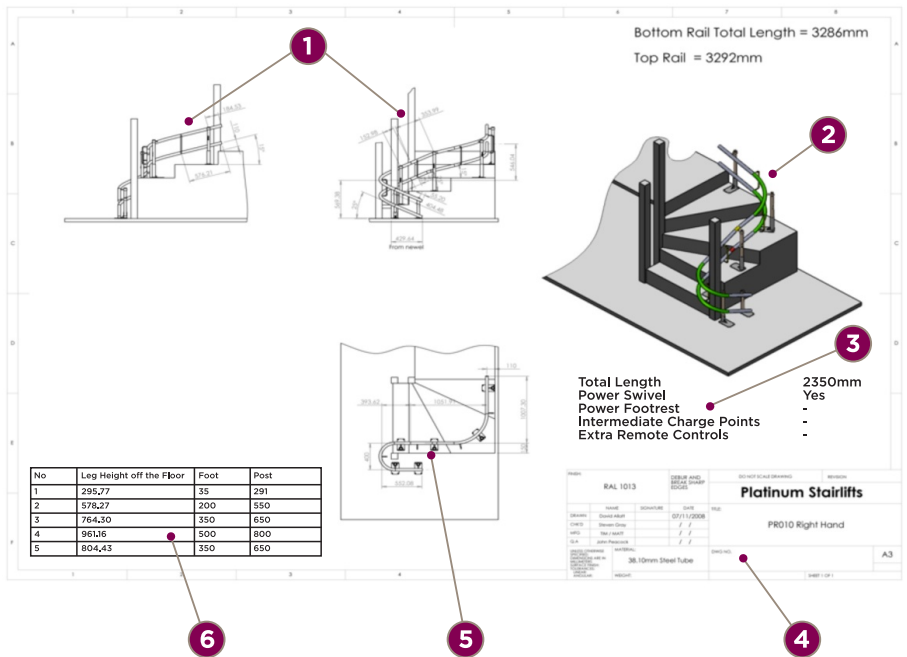
The stair treads should be inspected for their suitability of supporting the installed machinery. If in doubt, a qualified person should be engaged to check suitability.

Installing the Stairlift

Understanding the Installation Drawing

The installation of a stairlift is specific to each site. Details of components and installation requirements are listed on the Installation Drawing and Kitting checklist which are contained within the Kit box. This includes detailed measurements of how components should be arranged and precisely where and at what height they should be fitted.

Example of an installation drawing is shown below:



No	Description	Information
1	Elevation	Shows rail start and finish points and rail clearance over bottom and top noses.
2	3D Rendering	Shows number of rail sections and which risers leg bases are on.
3	Options Information	Information on fitted options such as powered footrests, etc.
4	Contract Information	Customer name, order reference, drawing number, etc.
5	Plan Drawing	Shows rail to wall distances and which risers leg bases are on.
6	Leg Height Table	Shows leg sizes and total leg height from step (approx.)

Installing the Stairlift

Laying out the Components

Each complete stairlift consists of the Carriage box, the Chair box, the Kit box and several rail sections. A Kitting List is included in the Kit box detailing all of the parts you have received.

Remove any protective packaging from the components.

It is usually best to start at the bottom of the stairs, and work your way upstairs.

Layout the equipment in the order in which it will be installed, making sure you have all the necessary components. This will include major items, as well as fastenings (such as spiro pins, nuts/bolts) and tools.

Handy Tip - Paint can build up in the pre drilled and tapped holes in the racking on the top and the bottom rail assembly sections. You will use these holes later on in the installation to connect the 0v side of the charge circuit. Clean these holes with a 5mm tap to ensure an easy fit when rail is set close to wall.

Assembling the rail

The leg bases provide stability to the stairlift and maintain it at the correct height above the ground. Each leg needs 3 grub screws to hold it in place. After loosely fitting all of the grub screws, place the correct leg bases onto the correct steps using the information contained in the table on the installation drawing.

Lower the rail support legs of the first (lowermost) rail assembly into the leg bases which will hold it in place. If there is the space it may be easier to place all rail assembly pieces into the relevant leg bases but do not join yet.

If possible, thread the charge current cable through the bottom rail tube of each section now. If not possible you will have to thread the DC cable through each section as you go along. If intermediate charge points are required holes will be drilled into the underside of the bottom rail to enable the charge current cable to exit and enter the rail at these points.

Tighten the centre grub screws on the rail support legs of the first rail assembly at the correct height on the leg bases (as needed). The legs should be clamped to ensure that the rail stands level vertically. The leg height shown on the Installation Drawing is only an approximate guideline.



Set the height of the next rail section approximately. Slide the higher rail assembly downwards into the lower rail assembly taking care not to trap charge current cable. Again, clamp the legs to ensure that the rail stands level vertically. Check first section for level.



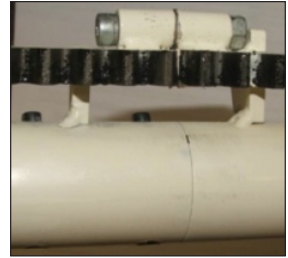
Use a set of clamps with a rack alignment block to set the pitch of the rack joint. This is to ensure that the carriage has a smooth transition from one section to another whilst running.



Installing the Stairlift

Assembling the Rail (cont.)

Once held in place with the clamp, fit and tighten the M6 x 40mm bolts with M6 nuts.



Taking care not to trap the DC cable, hammer the 38mm spiroI pins through the pre drilled holes in the rail joints. Ensure there are two spiroI pins on each joint on each rail. Ensure that each pin is flush with front of rail. Ensure that any swarf is removed from back of rail.



Handy Tip - Paint can build up in the pre drilled holes. Use a 5.9mm drill to ensure that the holes are clear before hammering the pins through. Also, use a 5mm pin punch with a pointed tip when hammering the pins through the rail. This will enable you to control direction of the pin accurately and will ensure you do not mark paint on track when hammering flush. If you look through the holes in the bottom rail tube you can see if the DC charge cable is obstructing. As the spiroI pins are hollow, you can look through as they are hammered into place to ensure there is no obstruction.

Repeat above steps until all the rail assembly pieces are together and the whole track is level.

Thread the DC power cable through the hole near the end of the track in both top and bottom sections of rail and secure using the screw-in cable grommets supplied.

Installing the Stairlift

Moving the Rail into the Correct Position

The rail assemblies are now assembled, but still need to be aligned accurately on the stairs. Refer to the Installation Drawing for details of the distances that the rail should be set over the first and last nosings (steps) and the clearances that should be set between the rail and any walls, newell posts or other obstructions.

Fixing the Rail Assembly in Place

The rail assemblies now need to be fixed into place using the supplied 6.3 x 50mm wood screws - 4 per base.

Handy Tip - If the rail is being fixed to bare wood, concrete, stone or marble, it is recommended that the carriage and chair are loaded at this point to check all clearances. Ensure that at least one of the grub screws is fitted and tight in each leg. The carriage loaded as described in the next section. Do not ride the lift at this point. When the lift is in the correct position, ensure that the rail assemblies are correctly fastened in place as described below before testing lift under load.

Starting with the second leg, slacken off the grub screw on this leg only. Make sure the leg base is resting flat on the step/landing. If the step is not level it may be necessary to pack the leg base to ensure it stays level as it is screwed down.

Insert the first screw and tighten. The next screw inserted should be diagonally opposite. Insert the remaining screws. Use a spirit level to check that the legs remain vertical as they compress any carpet/underlay.

Using a torque wrench, tighten all 3 grub screws in the base to 20Nm

Repeat this process with each leg, 4 screws and 3 grub screws per leg.

If any wall brackets are specified on the drawing these can be fitted now or after the carriage has been loaded.

If specified, the wall brackets must be fitted before the stairlift is handed over to the user.

The rail is now ready for the carriage to be loaded.



Installing the Stairlift

Fitting the Carriage to the Rails

Caution:

The weight of the Carriage is 34 kg when the batteries and all the components are installed.

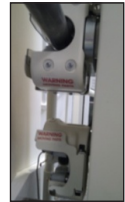
Open the carriage box and remove the skate retention packing cardboard. Ensure that the top skate loom is free and will not catch the top skate assembly as it moves while travelling on the track. Pay close attention to the area where the top skate assembly comes into contact with the physical limits on the casting.

The carriage can then be loaded on to the rail in one of 2 ways:

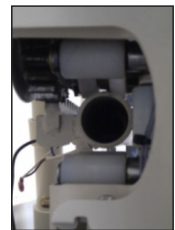
1. Insert the loading bar through the top skate rollers, ensuring that the male joint is pointing in the right direction. Lift the carriage, using one hand on either side of the skate assembly to stop the carriage moving on the loading bar. Alternatively, suitable clamps or tie-wraps can be used to secure the carriage.



Slot the male joint into the top rail tube, letting the carriage hang vertically, and, removing any clamps/tie-wraps used, slide the carriage down the loading bar and engage the pinion and main load roller on the bottom skate assembly correctly.



2. Slot the male joint of the loading bar into the top rail tube. Slot the white plastic loading cone into the bottom tube. Lift the carriage and thread the top skate rollers onto the loading bar. Holding the carriage vertical, slide it down the loading bar and engage the pinion and main load roller on the bottom skate assembly correctly.



A second, shorter, loading bar can be used in the bottom rail tube if you find it easier to fit this way. Lift the carriage and thread the top skate rollers onto the top loading bar. Holding the carriage vertical, slide it down the loading bar.

Ensure the main load roller is correctly positioned and locate the bottom skate onto the shorter, bottom rail loading bar. As the carriage comes to rest the pinion should be correctly aligned for loading.



The carriage can now be hand-wound onto the rail.

Installing the Stairlift

Fitting the Batteries

Caution:

When new, the 12V 35W 8.5Ah batteries will be pre-charged. These carry electrical charge, which provides a risk of electrical shock or fire if the battery terminals are shorted out.

Although they are sealed batteries, they do contain battery acid, so damaged or leaking batteries pose a risk of burns.

Fold down the footrest and ensure the battery isolator switch (8) is turned off.

Remove the two 7mm nuts and plastic washers located at the bottom of each carriage side cover. These covers can then be removed taking care not to damage the locating lugs at the top.



Remove the four pozi-drive screws found on the front of the carriage and remove the plastic carriage front cover.

In the battery compartment you will find the fused link, the rubber battery retention strap, a flat rubber divider and a stepped rubber divider.

Place the stepped rubber divider on the bottom of the battery compartment.

Place the first battery vertically in the compartment with the terminals at the top, facing towards you.

Place the flat rubber divider on top of the battery and then place the second battery on top of the first vertically in the compartment with the terminals at the bottom, facing towards you.



Connect the black lead to the **-ve** (black) terminal of the top battery and connect the red lead to the **+ve** (red) terminal of the bottom battery. Connect the fused link between the remaining **-ve** (black) and **+ve** (red) terminals as shown in the picture. Once the batteries are fitted and connected the plastic front, and battery side carriage cover can be replaced.

Leave the PCB side cover off until later in the installation process.

Installing the Stairlift

Fitting the Combined End Stops/Charging Ramps

The combined end stops/charging ramp units are used to stop the carriage at the end of the rails and to recharge the batteries while the lift is not being used. They should be fitted at both the bottom and the top of the rail. The carriage batteries are charged when the brass plunger on the back of the bottom skate of the carriage comes into contact with the charge ramp.

The units can be used to set how high or low the start and finish point of the carriage will be on the completed stairlift.

Each unit consists of three methods of stopping the carriage. The usual method of stopping the carriage being the spring loaded plunger mounted on the end stop. This plunger connects with the sprung metal end stop plate on the bottom skate of the carriage. If this method fails for any reason, the shape of the charge ramp is such that if the carriage travels past its usual stopping point, the brass plunger on the carriage will be depressed too far and 'over-run'. This will break the final limit circuit, bringing the carriage to a halt. In the unlikely event of both of the above methods failing, there is a physical buffer that covers the teeth on the racking, forcing the carriage to stop when the pinion comes into contact with it.

Caution:

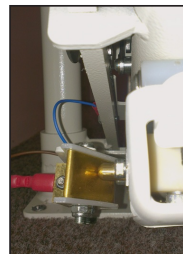
The fixing of the end stop and the distance between the stop and the charge ramp is crucial to the safe and reliable operation of the stairlift.

To fit the combined end stops/charging unit, place the carriage in the correct position to allow the customer to easy access. Place the end stop unit on the bottom rail with the spring loaded plunger touching the metal end stop plate on the carriage and, holding the end stop unit in position move the carriage away along the track.

Drill and tap two holes in the lower rail using a 4.2mm drill bit and 5mm tap. Attach end stop with the M5 x 10 button head cap screws supplied.



When the carriage comes to rest against the end stop, the charge plunger on the carriage should make a good contact with the charge ramp on the endstop unit.



The plunger should travel between a third and half way up the first face of the charge ramp. Too little and a good electrical contact will not be made and the batteries will not charge reliably. Too far and the final limit circuit will be broken and the lift will not move.

This contact position can be set by moving the position of the charge ramp along its mounting on the end stop assembly.

When adjusting, ensure the charge current is not connected.

Installing the Stairlift

Connecting the Charge Circuit

A DC charger is used to supply power for the charging circuit. This power supply should be mounted using the bracket supplied near a convenient mains outlet socket. All cables must be securely clipped or trunked to the vicinity of either the top or bottom of the stairlift rail, in accordance with current regulations.

The DC output from the charger consists of 2 cores, plain black indicates 0v, black with a white dash indicates +v.

Take the 2 core cable that you installed in through the bottom rail of the track earlier. Strip back the outer insulator and approx 10mm of the inner blue insulator.

Join the blue core and the plain black 0v charger core together with the red crimp on eyelet connector supplied and fix this to the racking using the supplied M5 x 10 buttonhead cap screw.

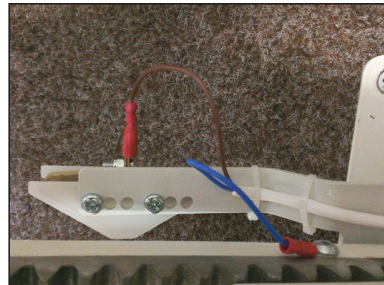
Join the brown core and the +v black with white dash charger core together with the supplied red crimp on spade connector and attach to the lug on the back of the charge ramp.

At the other end of the rail, take the 2 core white cable that you installed in through the bottom rail of the track earlier. Strip back the outer insulator and attach the inner blue core to the rack using the red crimp on eyelet connector supplied and fix this to the racking using the supplied M5 x 10 buttonhead cap screws.

Attach the brown core to the lug on the back of the charge ramp with the supplied red crimp on spade connector.

Clip all wires neatly to the end stop assembly using the supplied tie wraps to ensure that they do not foul the carriage as it is moving.

Plug in and turn on the Power supply and test that each charge ramp is supplying approx 24v.



Installing the Stairlift

Intermediate Charge point

An intermediate charge point is available as an option. It can be used in 2 different ways.

1. As an auxiliary charge point so that the carriage can be stored away from the bottom of the track if this causes an obstruction. The carriage will travel upwards to the next available charge point when the red park button is pressed on the remote control.
2. As a safe position for the customer to get on or off the lift on intervening floors. In addition to using the red park button on the remote control, by selecting the correct option from the menu system, the lift will also stop at the parking point from the joystick control, enabling the customer to either get off the lift, or, by pressing the control again continue to the next charging point.

If an intermediate charge point is required, this should be clamped to the racking in the correct position. The 2 core cable that you installed earlier will need terminating.



Strip back the insulator from both cables, connect both brown cores together using one of the crimp on spade connectors supplied.

At the other end of the rail, take the 2 core cable that you installed in through the bottom rail of the track earlier. Strip back the outer insulator. Connect the brown, positive cores to the lug on the back of the charge ramp using a supplied, crimp-on spade connector.



Connect the blue cores together using one of the crimp on eyelet connectors supplied and attach to the racking using one of the M5 x 10 buttonhead cap screws supplied. The charge point can be adjusted to enable the charge pin on the carriage to make a good contact but not activate the final limit switch when passing.

Clip all wires neatly to the end stop assembly using the supplied tie wraps to ensure that they do not foul the carriage as it is moving.

Plug in and turn on the Power supply and test that each charge ramp is supplying approx. +27 VDC.

Installing the Stairlift

Fitting the Chair to the Carriage

Remove the chair from the packaging. The key for the Key Switch (10) is attached to one of the chair arms. Remove, insert into keyswitch and turn clockwise thru 45°. In the packaging there will also be a plastic cover and 4 plastic pop rivets. Place these to one side for use later.

Remove the four 5mm allen key bolts, pictured below, from the carriage chassis. Leave the circular spacing plate in place. The spacing plate must be in place as the chair will catch on the top skate when swivelled otherwise.

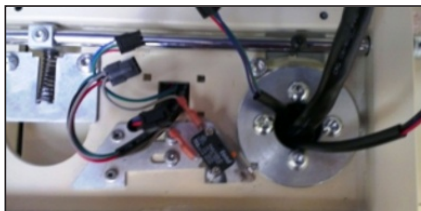
Ensure that the holes in the spacing plate line up with the holes in the chassis underneath.



Place the chair onto the chassis in the correct position, ensuring the looms are passed through the centre of the swivel mechanism and not trapped.



Attach the chair to the carriage using the 4 x 5mm allen key bolts. Tighten to a torque of 20 Nm.



Swivel the chair, making sure it locks securely at either end of its travel and the swivel interlock switch activates and releases correctly.

Installing the Stairlift

Chair and carriage electrical connections

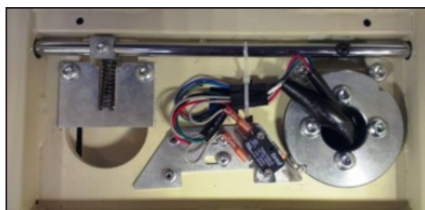
Inspect the individual connector blocks. The standard manual carriage will have one 6 way and one 3 way minifit molex connector. If your carriage is fitted with a powered footrest, it will be supplied with an additional 6 way minifit molex connector. The wiring for the connectors is colour for colour, therefore the male connector containing 2 x grey, green, black and red wires must be connected to the female with the same colours and the male connector containing white/red, yellow/black, blue/white, orange/black and pink/brown to the female with the same colours.

The 3 way minifit molex is the connection for the diagnostic display, the first 6 way is for the direction control and final limit circuit. The 2 spade connectors on grey wires should be connected to the swivel interlock switch as shown.



As the chair swivels in relation to the carriage it is important to ensure that the looms are secured correctly.

Using one of the supplied cable ties, secure the looms as shown. The ratchet of the cable tie must be positioned down either side of the loom connectors, not on top. Ensure there is a small amount of slack to allow the chair to swivel without the looms snagging on the bolts.



If a powered footrest is fitted, you may need to use 2 cable ties fixed together. Swivel the chair, making sure it locks securely at either end of its travel, none of the cables are being stressed and the swivel interlock switch activates and releases correctly.



Fit the supplied plastic cover using the fixings supplied

Chair Ergonomic Alteration

The chair can be individually tailored to better fit the customer or installation area. The arm rests can be widened or made shorter, and the seat pad can be moved forward.

The arm rests can be made shorter and/or further apart by removing the 4 x allen bolts, repositioning the arms and replacing the bolts.



Position 1. Fully extended, fully forward. This will give maximum seat width with maximum length of useable armrest.



Position 2. Fully extended, fully back. This will give maximum width of seat with minimum useable armrest. *(For use when swivel radius width at top of stairs is reduced.)*



Position 3. Mid extended, fully forward.



Position 4. Mid extended, fully back.



Position 5. Minimum extended, fully forward. This is how the chairs are supplied as standard.



Position 6. Minimum Extended, fully back. *(For use when swivel radius width at top of stairs is reduced.)*



Chair Alteration

Chair Ergonomic Alteration

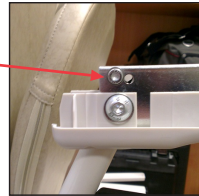
The chair can be individually tailored to better fit the customer or installation area. The arm rests can be widened or made shorter, and the seat pad can be moved forward.

When using positions 2, 4 & 6, the arm rest angle will need altering.

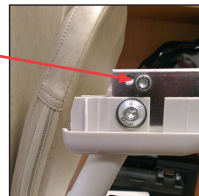
Remove 4 x pozi screws in bottom of armrest cover.
Remove armrest top.



Remove Bolt.



And Replace here.



The Seat pad can be moved forwards. Undo the zips on the seat pad. Remove the 4 allen bolts shown on the right, reposition seat pad. Replace bolts.



Test Running the Stairlift

Test Running the Stairlift, Unladen and Unprogrammed.

Important:

If there are any issues with the stairlift, the system may display System Status Codes. Refer to the System Status Codes section for more details of what these codes mean.

To test run the stairlift (unladen):

Make sure the area covered by the movement of the stairlift is free of obstructions. Fold down the footrest and swivel the seat into correct travel position. Leave the armrests in the upright position. Do not allow any weight to rest on the carriage as yet. Run the unladen stairlift to the very bottom of the track. While the stairlift is travelling check:

1. Footrest to riser, especially on fanning staircases
2. Armrest and seat back, especially on staircases with low bulkheads.
3. Seat back to wall/newel, especially on internal staircases
4. Back of armrest mounting and seat back to wall, especially on external bends

At the bottom check that the stairlift is charging correctly and the footrest is at the correct height to allow the user to easily access the stairlift.

Run the stairlift to the top of the track while checking all above points.

At the top check that the stairlift is charging correctly and the footrest is at the correct height to allow the user to easily access the stairlift. Also check the swivel radius to ensure that the downside armrest does not come into contact with the opposite side of the staircase. At the bottom and top, the footrest should be no higher than 170mm above the boarding point.

Programming the Carriage

The lift must now be programmed for the rail. All programmable features are accessed and set through the menu system of the control system. The speed, lift type, hand, swivel type and language settings now need to be set. The menu also contains settings for intermediate charge point behaviour and audible travel warnings.

The lift can travel at one of two speeds, Half Speed and Full Speed. Half Speed **must** be used at either end of the stairlift travel to ensure that the stairlift comes to a safe and gentle stop. This will also ensure that the stairlift does not 'over-run'. Half Speed **must** also be used on a small radius 'internal bends'. This is for the users comfort as travel around these bends at full speed can feel as though you are being pushed forward, out of the seat. It will also ensure that the carriage does not cause excessive wear on the rail racking.

The lift uses an encoder to create a map of the rail and the program defines what speed the lift will travel at different points on the rail. The lift uses the bottom skate, metal paddle activation to signify it's datum 'O' point, therefore the lift must always be programmed from bottom to top.

The Half Speed and Full Speed sections can only be programmed when the lift has been installed and the batteries at least partially charged. The charge circuit also needs to be connected

The lift will run at Half Speed when it is in learning mode.

If you need to re-start the learning process, power the lift off, power it back on again and run the lift to the bottom stop.

Test Running the Stairlift

To Program the lift:

If the PCB side plastic cover is not already removed, undo the two 7mm nuts and plastic washers located at the bottom of the cover. The cover can then be removed taking care not to damage the locating lugs at the top. Bring the lift to the bottom stop/charge point, and ensure the lift is correctly on charge. The diagnostic display should read **'Platinum'**.

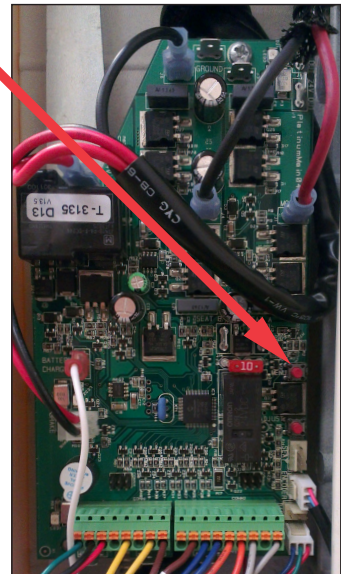


The top button, labelled **Menu**, cycles through the various menu options, the bottom button, labelled **Adjust**, changes the selected option.

The first operation is to set the hand of the lift. This is defined by the side of the staircase that the rail is fitted to when viewed from the bottom. Press the menu button twice until either **'Left Hand'** or **'Right Hand'** is displayed. Press the adjust button to change the selection.

If the powered swivel option is fitted, the next menu option sets the swivel type. Cycle through the menu until either **'Manual'** or **'Powered Swivel'** is displayed using the menu button, and adjust selection using adjust button.

The language of the diagnostic display is defaulted to **English** but can be set to **Dutch, French, Italian, Spanish, Portuguese or German** from within the menu. If an intermediate charge point is fitted, and is to be used as an entry/exit point for the user, cycle through the menu and adjust **'Landing Pass'** to **'Landing Stop'**.



If an unladen travel audible warning is required, cycle through the menu and adjust **'Quiet Travel'** to **'Travel Alarm'**. There is a setting in the menu to set the position of the diagnostic display. **Arm** for a display in the armrest, **Display** for the display in the front panel of the carriage or **Either**. The PCB can also be set to run the Platinum Horizon Straight stairlift using the **Straight** setting.

Straight setting must not be used on a curved lift as it increases the speed and disables the speed programming procedure.

Hinge setting must not be used as this function is not available on the Curve.

Test Running the Stairlift

To Program the lift (cont.):

The diagnostic display will time out after approx. 8 seconds back to it's normal state, displaying '**Platinum**'. Press and hold the menu button for 4 seconds until the display changes to '**Program 00000**'. You will notice a small **S** in the bottom right hand corner of the display. This indicates that the first section to be programmed is a slow, half speed section. The **00000** indicates that you are at the bottom of the track. Move the lift upwards approx. 250mm and stop. The number displayed will increase.

Press the adjust button once, and the **S** will be replaced with an **F**. This indicates that the next section to be programmed is a fast, full speed section.



If there are any tight radius/internal bends, the lift needs to travel at half speed around these. Use the adjust button to switch between Full and Slow speed for every internal bend.

If the rail configuration includes a parking wrap at the bottom, it is usually better to keep the lift at half speed from the bottom of the track until after the internal bend.

If an intermediate parking point is going to be used for the customer to get on/off the lift on intervening floors, the lift should be slowed to half speed 250mm before the charge point and can be returned to full speed 250mm after.

Continue until the lift comes to the end of the rail, ensuring that you program the lift to slow at least 250mm before it comes to rest against the top stop.

The lift will recognise that it has reached the top and exit programming mode. The display will revert to '**Platinum**' and the carriage will travel according to the program

Remote Controls

Installing the Remote Controls

There are 2 types of remote control, Infra-Red (IR) & Radio Frequency (RF). Each system comes with 2 remote controls as standard. More can be added if required. The controls have 3 buttons, **Up**, **Down** and a red **Park** button. The park button is only used in conjunction with the optional intermediate charge point. The 'Landing Stop' function, accessible through the main PCB menu system, can also be used in conjunction with these systems.

To install the remote controls: Infra-Red

The infra-red receivers are mounted in the arm of the chair.

Fit the batteries into the remote controls, then use each of them to call and send the stairlift to and from the other end of the track and then back again.

Locate suitable locations for the control holsters to be mounted, confirm these positions are suitable for the customer, and screw into position.

The controls are sent pre-programmed to the PCB. However, if there are several stairlifts installed in close proximity or there are other infra-red/radio sources in the area creating interference, the Infra-Red signals for each of the stairlifts can be changed so that they do not interfere with each other.

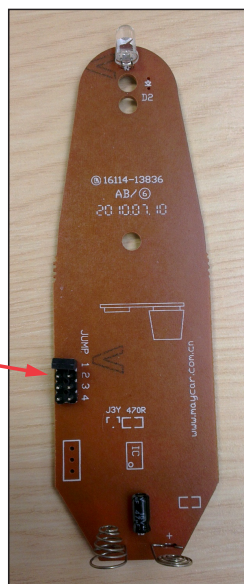
To change the signal.

Remove battery cover and batteries from the control. Remove the four screws holding the back cover of the control and carefully remove the PCB from the plastic housing.

Change jumper settings on all controls for this lift to either 1,2 3 or 4.

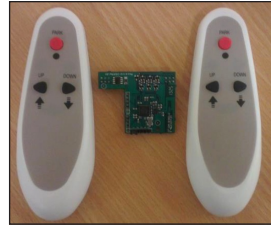
Carefully, put the PCB back into the plastic housing, replace back cover, batteries & battery cover.

To program the remote controls to the carriage, cycle through the menu and adjust 'Remote 1' to the corresponding jumper number.

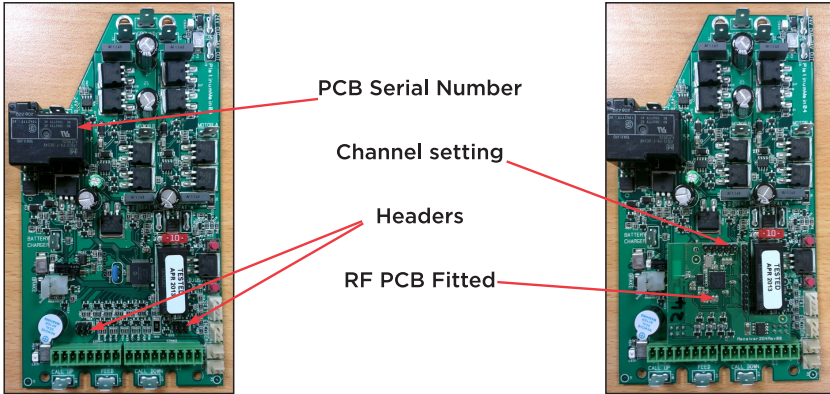


To install the remote controls: Radio Option

These controls have 3 buttons, Up, Down and Park. The park button will move the stairlift up until it reaches the next charging point.



The new RF receiver is a small PCB that fits directly onto headers on the main PCB.

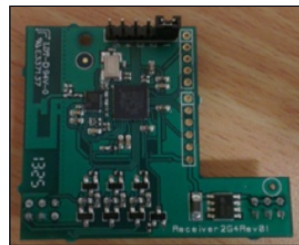


The controls are sent pre-programmed to the PCB. However, if there are several stairlifts installed in close proximity or there are other radio sources in the area creating interference, the channel for each of the stairlifts can be changed so that they do not interfere with each other.

To change the RF Channel

Set the jumper on the RF PCB. As described previously for the IR remote control, remove battery cover and batteries from the control. Remove the four screws holding the back cover of the control and carefully remove the PCB from the plastic housing.

Change jumper to match the setting on PCB. Carefully, put the PCB back into the plastic housing, replace back cover, batteries & battery cover.



This RF kit is compatible with Platinum Curve and Horizon Lifts with a main PCB serial number of 421 upwards.

The stairlift and charger must be turned off before installation of this PCB. Ensure that the connection of the PCB is correct before the stairlift is turned back on.

Incorrect connection may result in damage to the Main PCB.

Test Running the Stairlift (2)

Test Running Stairlift - Fully Laden and Programmed

Important:

The lift must be tested up to its Maximum Working Load before handover to the customer. Maximum Working Load is 125% of rated load.

Test running the stairlift fully laden ensures the lift is working correctly, and that it clears any obstacles.

It also begins the bedding in process. Please ensure that the rack is lubricated with a suitable silicone or synthetic PTFE based grease at this point. We recommend that you lubricate three teeth every 300mm on the rack.

To test run the stairlift (fully laden):

Move the stairlift to the bottom of the track, fold down the armrests and footrest, Load the chair to Maximum Working Load. Using one of the remote controls, send the stairlift to the top of the rail. If Powered Swivel option is fitted, keep direction control activated and ensure chair automatically swivels to safe entry/exit position. Press remote control in opposite direction to ensure chair swivels back to correct travel position.

To test manual swivel, lift swivel levers, and ensure chair will swivel into correct entry/exit position. Press direction control in downwards direction to ensure swivel interlock switch is working, and stairlift will not descend in this position. Lift swivel levers and ensure chair swivels back to correct travel position.

Use remote control to send stairlift down the stairs, stop part way along the rail and then reverse direction to bring stairlift back to the top, ensuring the stairlift slows and stops correctly.

Use the remote control to travel down the stairs. Ensure the stairlift slows and stops correctly.

Ensure the stairlift starts, stops, proceeds along the straight sections and corners smoothly at the correct speed.

Make sure the stairlift comes to a stop quickly, if you do any of the following actions:

Let go of the direction control

Encounter an obstruction with the footrest.

Encounter an obstruction with the safety pads on the carriage.

Swivel the seat.

Run the stairlift from one end of the track to the other; then return it to its original position. For both trips make sure it runs freely and smoothly, and proceeds clear of stair treads and any other fixed obstructions.

At one end of the track, stop the chairlift at one end of the track, undo the seatbelt and make sure the plug part of the lock retracts into its housing.

Lift up the seat, footrest and arm rests and make sure they all stay upright.

Run the stairlift to the middle of the track, then stop it.

Use the hand-winding procedure to make sure the chair can be hand-wound both up and down the track.

Final Checks

Once the lift has been installed, a series of tests must be performed ensure that the installation has been completed correctly and that the system works correctly and safely. A copy of these tests should be left with the customer. The tests are documented on **'The Example of the Certificate For Test & Examination After Installation Checklist'** detailed on the next page.

Contract/Installation Drawing

Check that the installed system has been installed in accordance with:

- The instructions on the contract
- The Installation Drawing

Electrical, Battery and Operational Tests

Detailed measurements and tests must be carried out before handover to the customer. An example of these tests are detailed on the **'Platinum Stairlifts Certificate for Test & Examination After Installation'** form on the next page. This is the document that our installers complete and it ensures that all electrical and safety systems are working correctly and that the stairlift operates in a safe manner.

It is recommended that your company use a certificate such as this when installing our product.

Clean Work Area

Before demonstrating to the user, please ensure that work area is left clean and tidy.


As drilling has taken place in this area it is recommended that the area is checked for swarf and thoroughly vacuumed.

Please remove any packaging not required by the user from site and, if possible, recycle.



Certification

Example of a Certificate for Text & Examination After Installation

Certificate For Test & Examination After Installation			
Location of Installation	Make Serial No. Rated Load	Model Rated Speed	
Electrical Tests 1. Electrical Supply Voltage V AC 2. AC Supply Frequency Hz 3. Phase Single 4. Stall Current Amps 5. Tripping Time Seconds 6. Mains Fuse Rating Amps 7. Check Mains Polarity Correct Yes / No 8. Motor Reversal Delay Seconds	Battery Tests 1. Battery Voltage V DC 2. Check Battery Polarity Correct Yes / No 3. Confirm Battery Enclosure Ventilated Yes / No 4. Confirm Batteries Securely Fitted Yes / No 5. Confirm batteries Fully Charged Yes / No 6. Confirm No Leak When Batteries Fitted Yes / No 7. Confirm Chassis Is Effectively Grounded Yes / No		
Installation/Operational Tests 1. Feet Are Correctly Screwed to Risers 2. Rail Joints Are Correctly Made 3. End Stops Are Correctly Attached To Rail 4. End Plates Are Correctly Attached To rail 5. Ensure Seat Mounting Bolts are Tightened to Torque 20 Nm 6. Confirm All On/Off switches Operate Correctly 7. Confirm All Safety Limits Operate Correctly 8. Confirm Final Limits Operate Correctly 9. Confirm safety Gear Operates Correctly 10. Confirm Swivel Interlock Switch Operates Correctly 11. Confirm Hinge Interlock Operates correctly (If Fitted) 12. Confirm Off Charge Indicator Operates Correctly 13. State Stopping Distance Of Carriage After Application Of The Brake 14. Confirm Handwinding Operates Correctly 15. State Distance Of Footrest Above Floor Level 16. State Running Current	Upper Upper Manual	Yes / No Yes / No Powered	Lower Lower Yes / No / NA Yes / No / NA Yes / No mm Yes / No mm Amps
Handover 1. Confirm User Manual Handed To Customer Yes / No 2. Confirm Stairlift Demonstrated To Customer Yes / No 3. Confirm Premises Left Clean & Tidy Yes / No 4. Balance Collected Yes / No E..... Cash/Cheque/ Credit Card			
Comments/Observations 			
I / We certify that on / / This stairlifts was thoughtly examined and found to be free from obvious defects.			
Name (Engineer)		Signed.....	
Name (Customer)		Signed.....	
		Company	

Instructing the User

Before using the stairlift for the first time the customer must be instructed in the safe use of all aspects of the stairlift. The User Guide is a good starting point for this instruction.

Once the training is complete, the User Guide must be retained by the user of the stairlift.

You now need to instruct the user (and any carers, helpers or other family members), how to use the lift. The demonstration should include:

- **Keeping the boarding / exit area of the stairlift clear**
- **It is important that the boarding / exit area of the stairlift is well lit**
- **Introduction to the Stairlift**
- **Installer Demonstration of the Stairlift**
- **Resident Use of the Stairlift**

Introduction to the Stairlift

Show the user the installed stairlift and point out all of the key features, including:

- **Footrest, arm rests and fold-down seat**
- **Seat Belt (lap belt) and locking mechanism**
- **Safety Edges and need to keep free from obstructions**
- **Direction Controls - armrest and remote control**
- **Power-on switch and key-switches**
- **Emergency hand-wind mechanism**

Installer Demonstration of the Stairlift

The installer should then use the stairlift themselves to demonstrate the following:

- **How to fasten and unfasten the lap-belt, and stress how important it is to use this at ALL times.**
- **How to use the Remote Control to move the stairlift up and down the stairs.**
- **How to fold up and fold down the footrest, seat and arm rests, and why you need to do this.**
- **How to use the swivel seat, how to sit on the seat safely at the top and the bottom of the stairs.**
- **How to get up from the seat safely.**
- **How to use the direction controls to go up and down; how to stop, start and change direction.**
- **How to lock the stairlift so it can not be used as a plaything - for example if children are visiting.**
- **How to open the Remote Control to replace the batteries (every 6 months)**

Customer Hand-Over

Resident use of the stairlift

The installer should then guide the resident to use the stairlift so they are completely familiar with the stairlift and its safe operation, including:

- **Using the remote control to send or bring the stairlift.**
- **Safely using the swivel seat to get on the stairlift at the bottom of the stairs, fastening the seat belt, going to the top, unfastening the seat belt, and safely using the swivel seat to get off the stairlift at the top of the stairs. And this equivalent procedure for going to the bottom of the stairs.**
- **How to start, stop, reverse and chairlift using the direction controls.**
- **How to lock the stairlift.**
- **Make sure the resident and any-one else asks any questions they want to.**
- **Ensure the customer understands what the Status display codes mean.**
- **Ensure the customer understands what to do in the event of a breakdown.**
- **Ensure the customer is aware of your companys service procedure.**
- **Ensure the customer has the correct contact telephone numbers in the event of a breakdown or to request Service calls.**

Paperwork - Signing the Test Certificate

If a test certificate has been used to provide a checklist of important tests and checks that need to be made by you, it should now be shown to the customer. This will demonstrate that all the tests have been done correctly, and that the installer has completed the installation to a satisfactory standard.

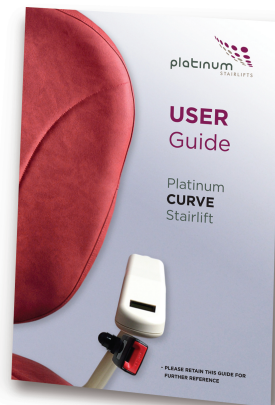
It also provides a proof that the customer is happy with the installation and the instruction given, and they have formally accepted it as an installed and working system in their premises.

When the installation and instruction is complete, both parties should sign and date the Certified section of the test certificate.

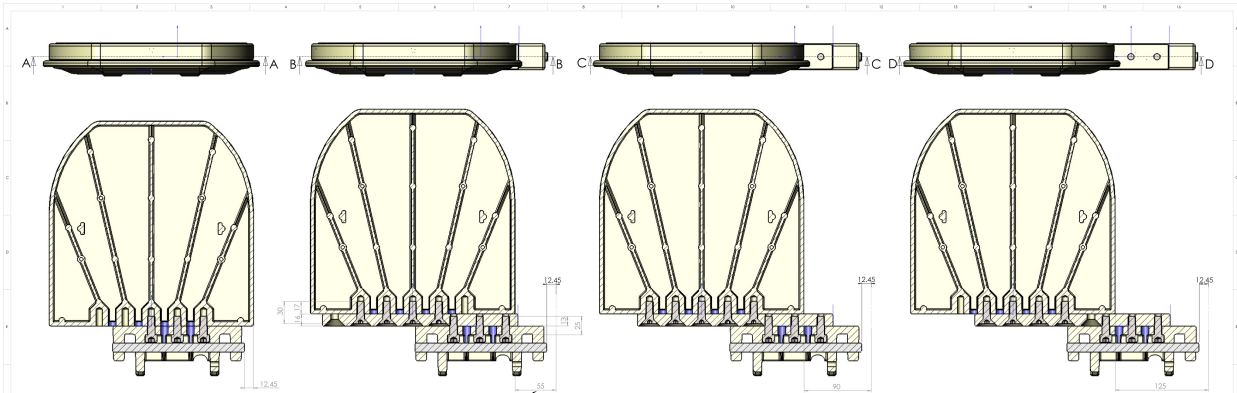
User Guide

Hand a copy of the Platinum Curve User Guide to the customer, requesting that they keep it to hand for easy reference by themselves, any family members, carers or other helpers.

An Installation & Service Record sheet is contained in the User Guide and should be signed and dated upon completion of installation.



Offset Footrest Option



A-A This view shows standard foot rest ie without off set foot rest adaptor

B-B Off set position 1

C-C Off set position 2

D-D Off set position 3

Notes

This adaptor can be used in 3 positions as shown.

The adaptor is to be screwed to the foot rest using a minimum of 4 screws, where possible use all 5.

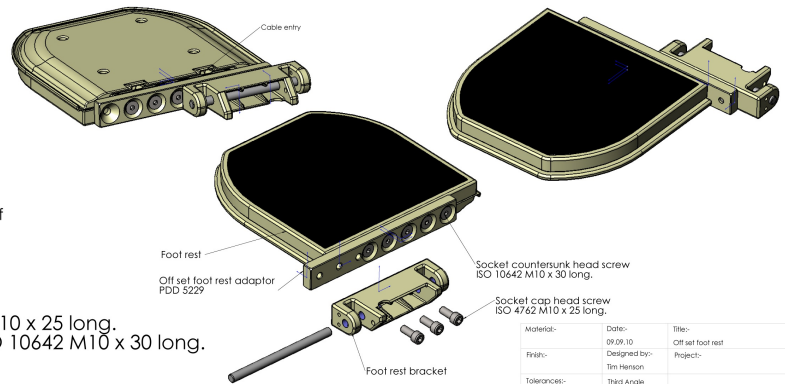
The foot rest bracket is then to be screwed to the adaptor using 3 screws.

The adaptor can be used to the right or left.

Cable to the foot rest has to be routed on out side of bracket and in slot on cover

Kit contents

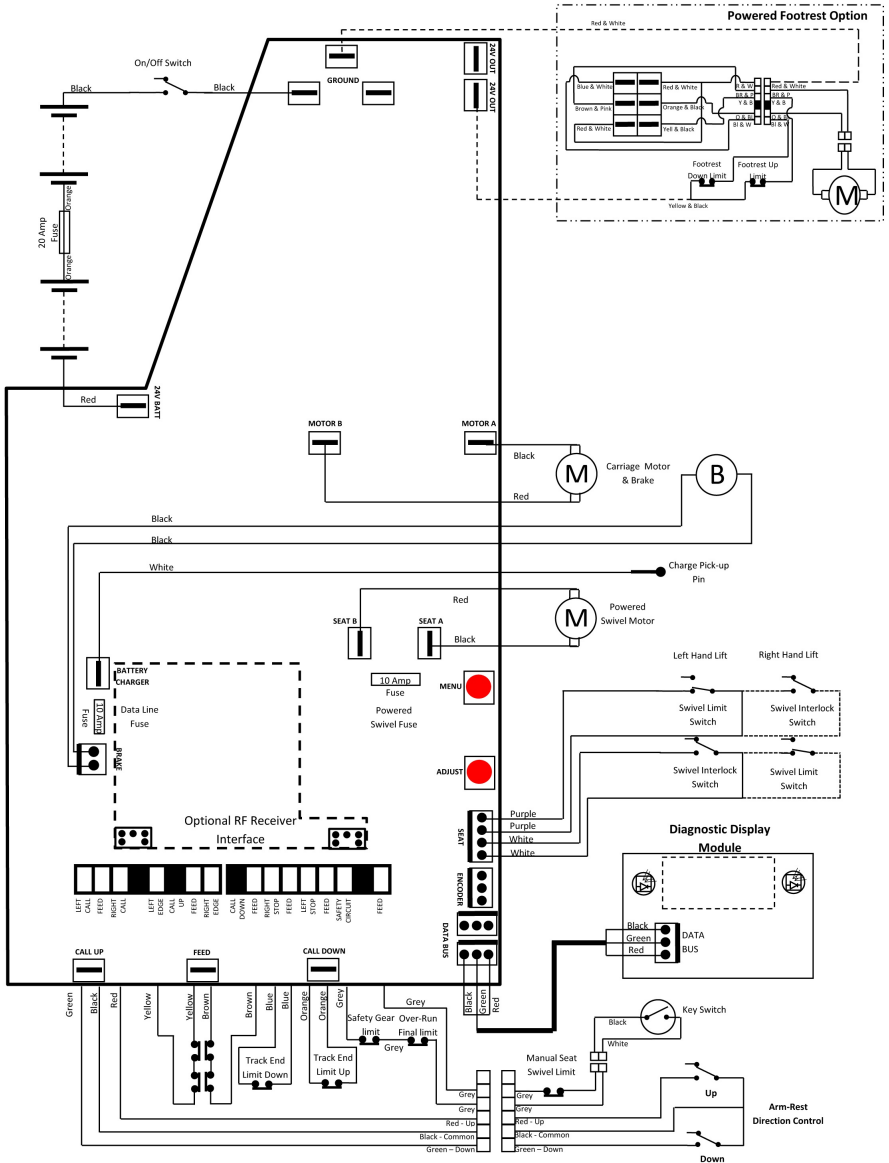
- 1 off Off set foot rest adaptor PDD 5229.
- 3 off Socket cap head screw ISO 4762 M10 x 25 long.
- 5 off Socket countersunk head screw ISO 10642 M10 x 30 long.



Material:	Date:	Title:
Finish:	09/09/10	Off set foot rest
Tolerances: Lengths +/- 0.1 Angular +/- 1	Designed by: Tim Hanson	Project:
	Thru Angle projection A1	Platinum Stairlifts
Drawn by the name of Professional	Scale: 1:2	Drawing Number: PDD 5228
		Issue 2

Connection Diagram

Connection Diagram (powered swivel)



Weight Limits

The stairlift has been designed to carry one person only, in a seated position. The standard stairlift has a maximum weight limit of 120kg and the heavy duty stairlift has a maximum weight limit of 160kg.

Operating Periods/Excessive Use

The stairlift has been designed to run for four minutes with a break of at least six minutes afterwards. If you use the stairlift too often without taking a break, the motor will not cool down between journeys and may become damaged.

Replacement Batteries

We recommend that the batteries in each remote control are renewed at least every six months. This is the responsibility of the user.

Maintenance

To maintain safe and reliable operation, the standard stairlift needs a annual safety inspection and service.



Caution:

Modifications which have not been expressly approved by the manufacturer may void the warranty and may cause damage.

Your stairlift should be inspected and maintained by a Platinum approved service engineer.

Upholstery

Carelessness with matches, cigarettes and so on can cause a fire. The upholstery material used on your stairlift has been tested for compliance with BS5852.

Diagnostic Codes

Diagnostic Display

These codes are displayed on the Diagnostic display panel on the arm.

Code	Meaning
No Display	No power 1. Check the battery isolator switch is in the 'I' position. 2. Check batteries are correctly connected and in good order. 3. Check 10 Amp data line fuse.
Platinum	OK The stairlift is on charge and everything is OK, lift should operate normally.
Safety Circuit / Final Limit	Final Limit Fault/Safety Circuit short to 0v 1. Check key switch is on connected and working. 2. Check seat swivel switch is connected and working. 3. Check if the stairlift has over-run and switch is connected and working. 4. Check if OSG and safety gear has actioned and switch is connected and working.
Low Battery	Batteries Need Charging Stairlift batteries are down to 21V. 1. Check transformer is plugged in to mains socket and turned on. 2. Check charging point voltage is present unloaded and loaded. 3. Check charge voltage is present on white charge connector on main PCB.
Off Charge	Lift is off Charge Stairlift batteries are not charging (the stairlift may still work). To charge them: 1. Move the stairlift to a charging point. 2. Check transformer is plugged in to mains socket and turned on. 3. Check charging point voltage is present unloaded and loaded. 4. Check charge voltage is present on white charge connector on main PCB.
End Stop	End Stop Activated Ensure that both track and staircase are clear of obstructions.
Safety Edge	Lift stopped by safety edge in direction of travel (footplate or side cover) Ensure that both track and staircase are clear of obstructions.
Move Right	Lift travel direction Right.
Move Left	Lift travel direction Left.
Seat Swivel	Seat in Swivelled position Lift cannot move until powered swivel seat is returned to travel position. 1. Check powered swivel option is selected in menu. 2. Check lift is set as correct hand in menu. 3. Check lift is at top of track and bottom skate end stop is activated. 4. Check transformer is plugged in to mains socket and turned on. 5. Check charging point voltage is present unloaded and loaded. 6. Check charge voltage is present on white charge connector on main PCB.
Thermal Cut Out	Motor and motor drive are running too hot, overloaded lift or excessive use. Switch lift off and allow motor to cool.
Call Conflict	More than one conflicting call received. Direction toggle or wall control direction button stuck on.
Release Joystick	Conflicting call received. User needs to release joystick and re-input call.
Brake Fault	Motor brake inoperable. Reset lift. Check brake connection on main PCB and reset lift.
Relay Fault	Power relay did not close Check battery charge level, Reset lift. Tap Relay. If problem persists, renew PCB.

There are also 3 thermal fuses on the the PCB. If any of these fuses are activated, a red LED located nearby will light. This generally indicates a wiring fault on one of the circuits connected to the PCB in the surrounding area to that LED.

Hand Winding the Stairlift

Hand Winding the Stairlift

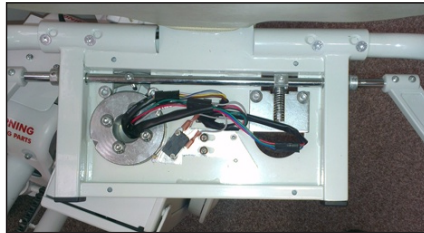
If necessary, for example to release the safety gear after the OSG has activated or to return the carriage from an over-run position, the stairlift can be manually hand-wound using the supplied winding handle.

If the OSG has been activated, the carriage should only be hand-wound in the upwards direction. The carriage should not be moved under its own power with the handwinding tool engaged.

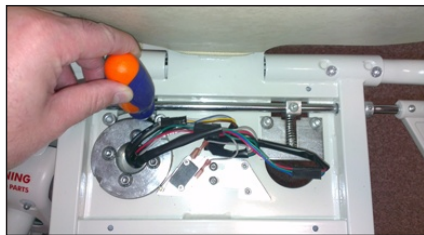
Turn off the stairlift. Remove the plastic cover from the seat frame under the seat pad.



Swivel the chair fully out using the manual swivel levers.



Insert the hand wind tool through the opening above the swivel boss and locate onto motor shaft, rotate.



Releasing a Trapped User

If a user becomes trapped on the stairlift due to a fault, they should be assisted from the chair in the following way:

- **Lift one of the manual swivel levers and rotate the carriage towards the staircase until seat locks into swivelled position.**
- **Release users seatbelt**
- **The user can then be helped from the chair, up the stairs.**
- **Lift manual swivel levers and return seat to original position.**

Never exit seat without first turning towards staircase and ensuring that it locks into position.

Always exit upwards.

Engineer's Menu

Engineer's Diagnostics and Settings

Further diagnostics and settings are available by cycling through the menu system.

Code	Meaning
Position 12345	Lifts current position on rail. Bottom end stop is 00000. Press and hold menu button to re-program.
Remote 1/2/3/4	Shows current Infra Red Remote channel selection. Press adjust button to change.
Right / Left Hand	Shows current installation hand selected. Press adjust button to change.
Quiet Travel / Travel Alarm	Shows current travel alarm selection. Press adjust button to change.
Landing Stop / Pass	Shows current landing selection. Press adjust button to change.
Powered / Manual Swivel	Shows current swivel selection. Press adjust button to change.
Edge 123	Number of sensitive edge trips since last engineer reset. Press adjust button to reset to 0.
Low Batt 123	Number of low battery events since last engineer reset. Press adjust button to reset to 0.
Trips 12345	Number of trips (up or down) done by control system. Not resettable.
Safety 123	Number of safety circuit trips since last engineer reset. Press adjust button to reset to 0.
Brake 123	Number of brake faults since last engineer reset. Press adjust button to reset to 0.
Relay 123	Number of relay faults since last engineer reset. Press adjust button to reset to 0.
Lost Position	Number of times position has been lost since last engineer reset. Press adjust button to reset to 0.
Battery Bar (bar display 1-8)	A bar display of battery voltage. Approx. 21V (all off) to 27V (all on).
Low battery	Battery below 21V.

Servicing

The Standard 120 Kg (19 stone) stairlift requires a service every **12 months**.

The Heavy Duty 160Kg (25 stone) stairlift requires a service every **6 months**.

Items listed below should be checked and renewed if necessary.

If pinion and/or main load roller need replacing, you will require a 3 legged bearing puller to remove pinion and cam.

When reassembling, ensure pinion and cam keys are inserted and aligned correctly.

The pinion/cam must be wound or pressed back into place.

Hammering will break motor/gearbox oil seals and void warranty.

When replacing the circular, free spinning pinion guard, the bolt **must** be re-fit using using loctite type 272 or local equivalent.

Service Carriage

Remove carriage from rail. Turn off.

1. Top Skate. Remove all skate covers.

- Check rollers for wear/damage. To renew rollers, remove 17mm bolts discard old rollers, lubricate bolt shafts lightly, and fit new rollers. The bolts must be replaced using loctite type 272 (or local equivalent) and tightened to 40NM
- Check all rollers rotate freely
- Check all yokes rotate freely
- Check skate swing arm rotates freely and there is no excessive front to back play
- Check all wires and connectors for damage & and operation of all switches
- Remove any debris and clean all surfaces
- Replace all covers ensuring spacers, springs and nuts are all present and correct
- Check operation of safety edges

2. Bottom Skate. Remove all skate covers.

- Check rollers for wear/damage. If replacing, lubricate roller shafts lightly
- Check pinion for wear/damage
- Check pinion guard rotates freely
- Check all rollers rotate freely. If necessary lubricate roller shafts lightly
- Check bottom skate revolves freely to limit of wiring loom on drive shaft (If action feels notchy this could be an indicator of bearing damage)
- Check bottom skate moves freely along drive shaft. Lubricate if necessary
- Check all wires and connectors for damage & and operation of all switches
- Check operation of OSG and safety gear. Pay close attention to condition of large main load roller
- Check operation of charge pin and final limit switch
- Remove any debris including excessive, built up grease and clean all surfaces
- Replace plastic covers ensuring they fit together correctly. Replace metal covers ensuring the springs are in place and safety edges operate correctly
- Re-load carriage on to rail. Re-fit end stop

Service Carriage (cont.)

3. Carriage Body. Remove side covers.

- Check all wiring and connectors to PCB
- Check all wiring and connectors to batteries
- Check battery condition. Replace if necessary
- Check battery retaining strap
- Check brake release and hand-wind mechanism operates correctly
- Check wiring, connectors and switches on side cover safety edges
- Remove any debris and clean all surfaces
- Ensure footrest operates correctly
- Ensure footrest safety edges operate correctly
- Ensure footrest carpet is fixed correctly
- If powered footrest option is fitted, check all wiring, connectors and mechanical linkages. Ensure the area is free of debris. If necessary lubricate. Check operation
- Replace side covers ensuring they fit correctly and safety edges operate correctly
- If powered swivel option is fitted, remove plastic covers, check all wiring and connectors, ensure the area is free of debris. Check operation and replace plastic covers

4. Chair. Remove center seat pad.

- Check all wiring and connectors
- Ensure the 4 x M8 x 10 Hex bolts are tightened to a torque of 20 Nm
- Ensure manual swivel mechanism is free of debris and operates correctly
- Ensure swivel interlock switch operates correctly
- Ensure Diagnostic Display shows correct codes
- Check arm rests operate correctly
- Check seat belt operates correctly
- Check all controls operate correctly
- Replace seat pad

Service Rail

- Clean excessive grease off racking and inspect for damage/wear. If necessary re-apply lubrication. We recommend that you lubricate three teeth every 300mm on the rack
- Inspect rack jointing bolts and replace/re-fit if necessary
- Clean rail tubes and inspect for damage/wear
- Check combined end stops/charging ramps are fixed firmly and in the correct position
- Inspect all sprung roll pins on rail joints and replace/re-fit if necessary
- Inspect all grub screws in bases. Ensure tightened to 20Nm
- Inspect all leg screws and replace/re-fit if necessary
- If wall brackets are fitted, inspect screws and bolts and replace/re-fit if necessary
- Check charge circuit is operating correctly
- Check carriage stops in the correct position at the top and bottom

Notes



Platinum Stairlifts Tel. +44 (0)1535 631177 Fax. +44 (0)1535 631188

Unit 10, The Crossings, Crosshills Business Park, Crosshills, Keighley,
West Yorkshire, United Kingdom, BD20 7BW

enquiries@platinumstairlifts.com www.platinumstairlifts.com